



PPILOW

Poultry and Pig Low-input and Organic
production systems' Welfare

The European PPILOW project was launched on the 1st of September, 2019. PPILOW aims to co-construct **innovations to improve the welfare of poultry and pigs reared in organic and low-input outdoor farming systems** through a **multi-actor approach** conducted by 22 partners in 9 EU countries.

PPILOW's participatory approach, involving all actors of the value chain from farmers to consumers, citizens, scientists and policy makers for proposing and studying welfare improvement levers is original.

The project is unique also because it delivers a combination of practical solutions to improve animal welfare. These can be applied on a pan-European basis with specific adjustments tailored to meet citizen's expectations and the target market.



Main goals

- PPILOW will co-create with end-users animal welfare self-assessment tools, innovative breeding and rearing strategies and techniques for improving the welfare of animals by avoiding damage to physical integrity and the elimination of one day-old layer male chicks.
- PPILOW strategies will favour positive behaviours, and improve health and robustness in both poultry and pigs.
- PPILOW innovative techniques will be investigated experimentally and the most promising ones will be tested on-farm.
- Multi-criteria analyses of the most effective breeding and rearing strategies will evaluate their impacts by using the 'One Welfare' concept embracing sustainability goals, with specific emphasis on animal and human welfare.
- PPILOW will create economic and business models for the use of the high-quality products generated from the adoption of innovative strategies.
- PPILOW will develop dissemination activities and involve National Practitioner Groups throughout the EU for facilitating change.



Expected outcomes

- Improvement of pig and poultry welfare in EU low-input outdoor and organic systems.
- Increased sustainability of these productions especially in terms of animal welfare and human well-being.
- Reduction in the use of veterinary drugs through the improvement of animal robustness and resilience.
- Identification and selection of valuable genotypes with relevant traits suitable for outdoor systems and with a higher survival rate.
- Innovations for limiting parasite infections through different feeding and management strategies.
- Identification of valuable genotypes and management techniques to limit the risk of boar taint in non-castrated male pigs.
- Promotion of new farming systems valorizing layer male chicks.
- Provision of welfare self-assessment tools.
- Optimization of an in ovo-sexing technique.



For more information about the PPILOW project:

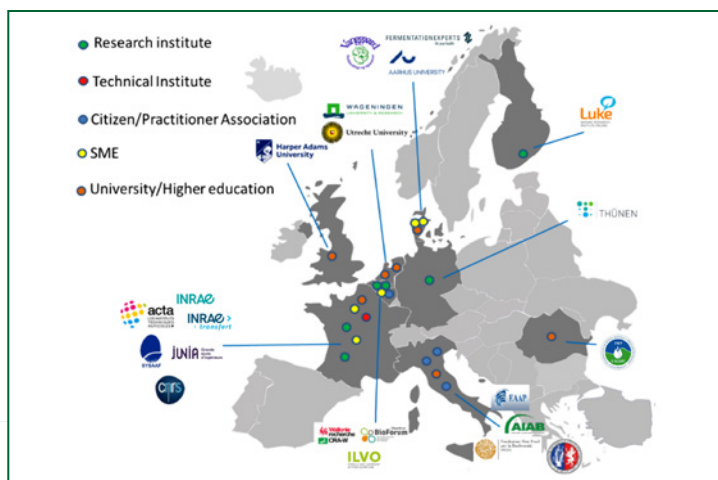
Project Coordinator: **Anne Collin**, INRAE (BOA Joint Research Unit)

Anne.Collin@inrae.fr

Project Manager: **Anthony Vermue**, INRAE Transfert

anthony.vermue@inrae.fr

PPILOW partners



The PPILOW project has received funding from the European Union's Horizon 2020 Research and Innovation Programme under grant agreement N°816172.

<https://cordis.europa.eu/project/rcn/222524/factsheet/en>

www.ppilow.eu

Disclaimer: the sole responsibility of this document lies with the authors. The Research Executive Agency is not responsible for any use that may be made of the information contained therein.



Images ©: CRA-W, ILVO, INRAE - Armelle Prunier, ITAVI,
Pascal Le Douarin Réussir Aviculture, VAANGGARD

