



FROM ITS ROOTS

organic inspires life.



Organic World
Congress 2021

FRANCE

STAKEHOLDER FORUM

Session 25: Global and multi-actors



**Organic World
Congress 2021**

FRANCE

**Organic World
Congress 2021**

FRANCE

WWW.OWC.IFOAM.BIO/2021



THE MULTI-ACTOR PPILOW EUROPEAN PROJECT: A PARTICIPATIVE APPROACH TO CO-BUILD INNOVATIONS FOR WELFARE IMPROVEMENT IN ORGANIC PIG AND POULTRY FARMS

Anne COLLIN

INRAE, Université de Tours, BOA, 37380 Nouzilly, France

Micheloni C, Jamart A, Re M, van Vooren L, Niemi J, Tuytens F, Rodenburg TB, Roinsard A, Steinfeldt S, Thobe P, Carelli R, Sciarretta M, Bonnefous C, Bodin P, Rosati A, Van den Brand H, Rocchi L, Reverchon M, Decruyenaere V, Wavreille J, Brunsgaard G, Depraetere S, Grenier K, Vanggaard JB, Ponzio R, Guesdon V, Leruste H, Walley K, Cozma V, Le Bihan-Duval E, Engberg R, Réhault-Godbert S, Baldinger L, Thys M, Prunier A, Merlot E, Tallet C, Montagne L, Canario L, Delanoue E, Courboulay V, Hercule J, Leterrier C, Latchoumia J, Warin L, Collin A

This project has received funding from the European Union's Horizon 2020 research and innovation programme under grant agreement No 816172



Why is it important to consider welfare in organic farming systems?

- High quality of the rearing system and of the products
- Diversity of practices throughout Europe
- Still a need to improve animal welfare and limit mortality, in relation to outdoor access challenging the animals, ethical issues, the wish of practitioners and societal expectations



Evaluation of the animal welfare-improving practices by taking into account environmental, economic and social impacts *including human well-being (practitioners, consumers, citizens)*

PPILOW partners and collaborators



PPILOW

Poultry and Pig Low-input and Organic
production systems' Welfare

2019-2024

Coordination: **INRAE**

23 PPILOW Partners in 9 countries
9 National Practitioner Groups (NPG)

www.ppilow.eu

- Research institute
- Technical Institute
- Citizen/Practitioner Association
- SME
- University/Higher education



INRAE
INRAE >
> transfert

JUNIA
Grandes écoles
d'agriculture
1869-1994-2019



Composition of the National Practitioner Groups

Participatory approach led by AIAB (Italy)

Practitioners involved:

- Farmers
- Breeding companies
- Hatcheries
- Nutrition firms
- Equipment firms
- Slaughter houses & Processors
- Retailers
- Production organizations
- Veterinarians...



©INRAE

Different organisation scales depending on the country and production types

Other members of the society involved:

- Organic production syndicates, associations or federations
- Consumer associations
- Citizen associations, especially dedicated to animal welfare
- Policy makers...




©USAMV Cluj

Partners involved in the facilitation of

NPGs



- 1)  and  UNIPG in Italy for broilers
- 2)  acta ( itab) and  INRAE in France
for broilers and layers
- 3)  THÜNEN in Germany for broilers and layers
- 4)  BioForum and  Utrecht University in The Netherlands and
Belgium (Flanders) for layers
- 5)  AARHUS UNIVERSITY in Denmark for layers

Partners involved in the facilitation of

NPGs



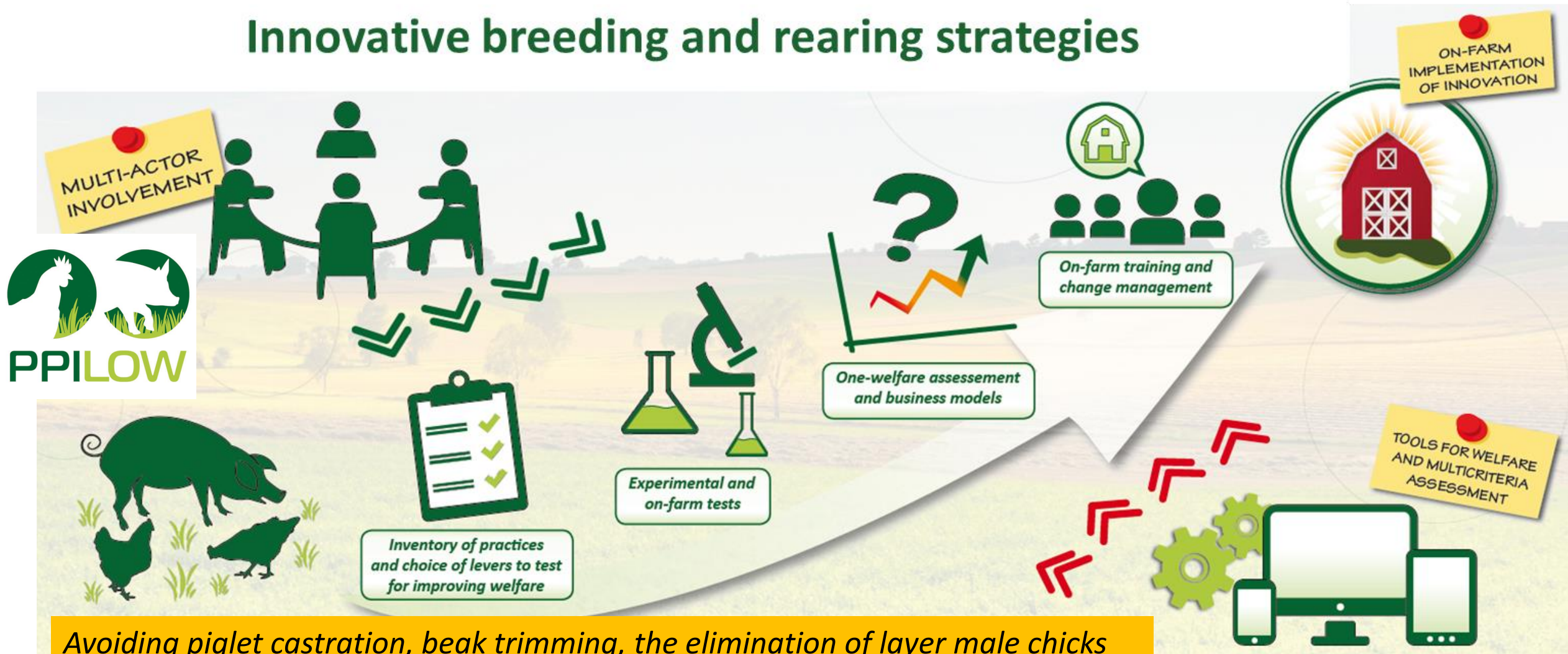
1)  **AIAB** in Italy
ASSOCIAZIONE ITALIANA AGRICOLTURA BIOLOGICA

2)  **acta** ( **itab**) and  **ifip**) with **INRAE** in France
LES INSTITUTS TECHNIQUES AGRICOLES # Institut de l'agriculture et de l'alimentation biologiques institut du porc

3)  **BioForum** and  **Wallonie recherche CRA-W** in Belgium
Vlaanderen SECTORORGANISATIE BIOLANDBOUW EN -VOEDING

4)  **USAMV** in Romania
1869 USAMV

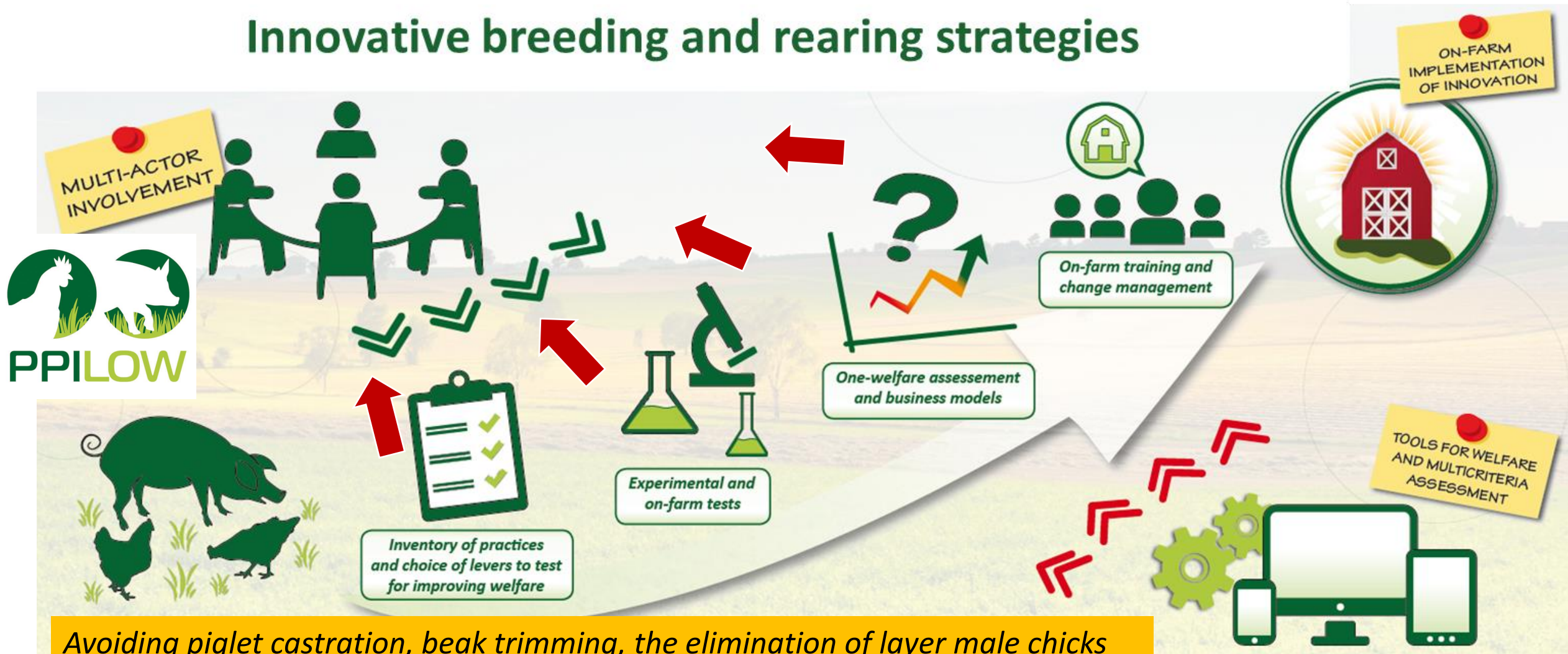
Innovative breeding and rearing strategies



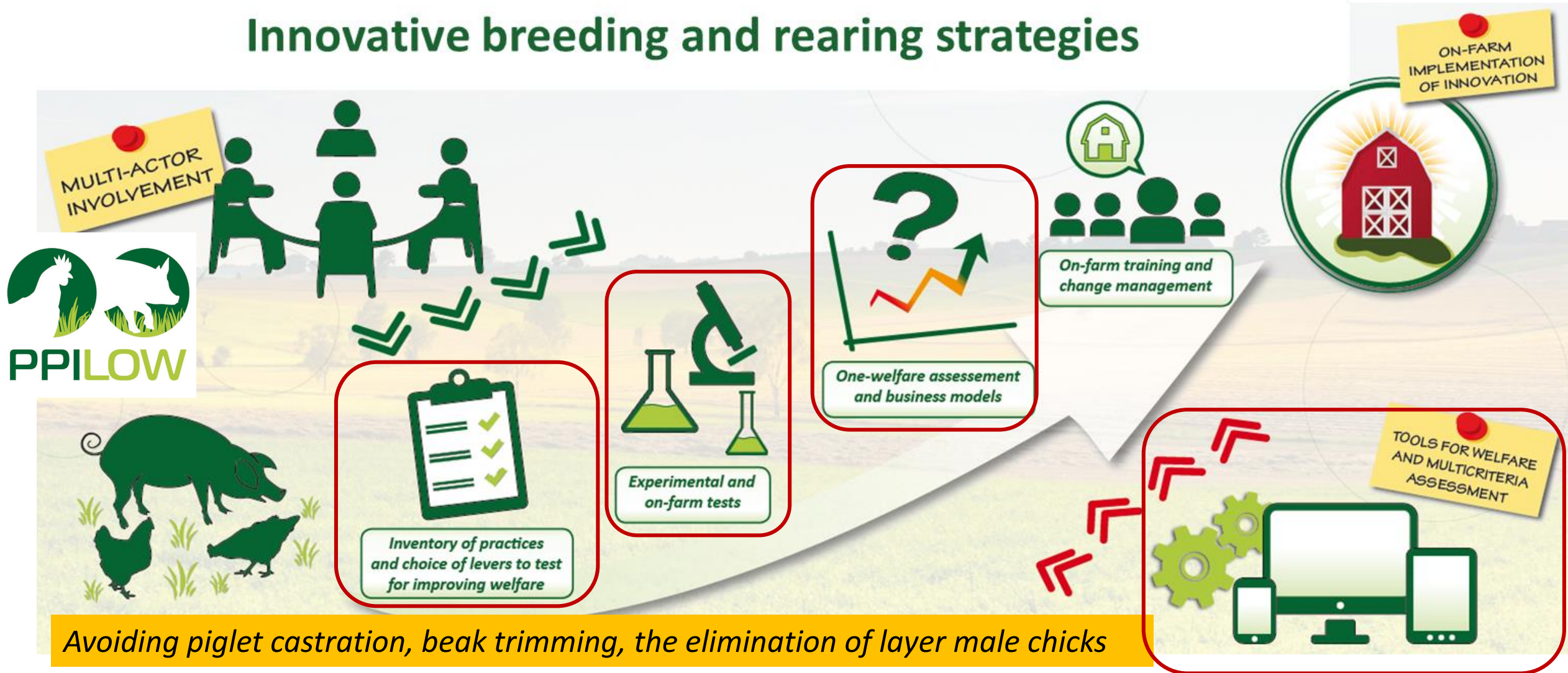
Avoiding piglet castration, beak trimming, the elimination of layer male chicks

Favouring positive behaviours, improving health and robustness

Innovative breeding and rearing strategies



Innovative breeding and rearing strategies



Poultry and Pig Low-input and Organic production systems' Welfare (2019-2024)

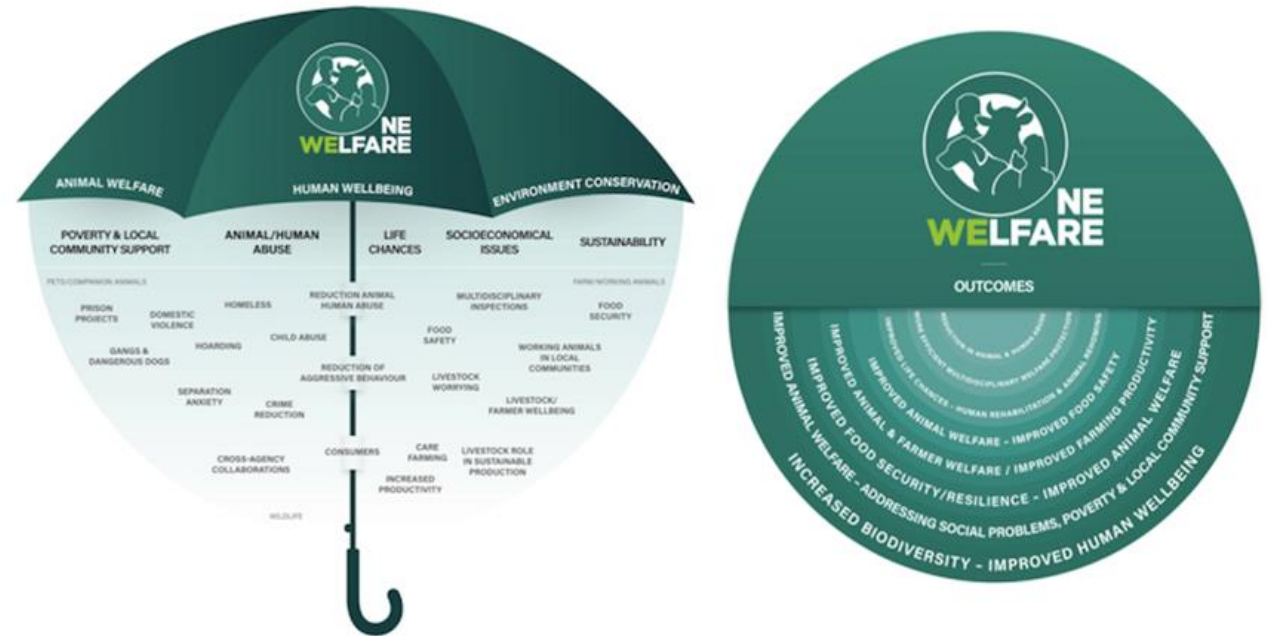


Some examples of practitioner involvement in PPILOW field studies :

- Dual-purpose breeds (FR, DK, DE)
- New farrowing systems for sows (DK, ...)
- New feeds or plants for limiting diseases (BE, DK, RO, IT...)
- Early life improvement levers (FR)
- Enrichment for rearing hens without beak trimming (NL)
- Welfare self-assessment tools (NL, BE, FR)
- *PIGLOW and EBENE applications*
- Light colour for rearing laying hens (IT)
- ...

Assessments following the Concept

'ONE WELFARE'



Garcia Pinillos et al. Veterinary Record 2016, 179: 412-413

<http://veterinaryrecord.bmj.com/content/179/16/412/DC1/embed/inline-supplementary-material-1.pdf>

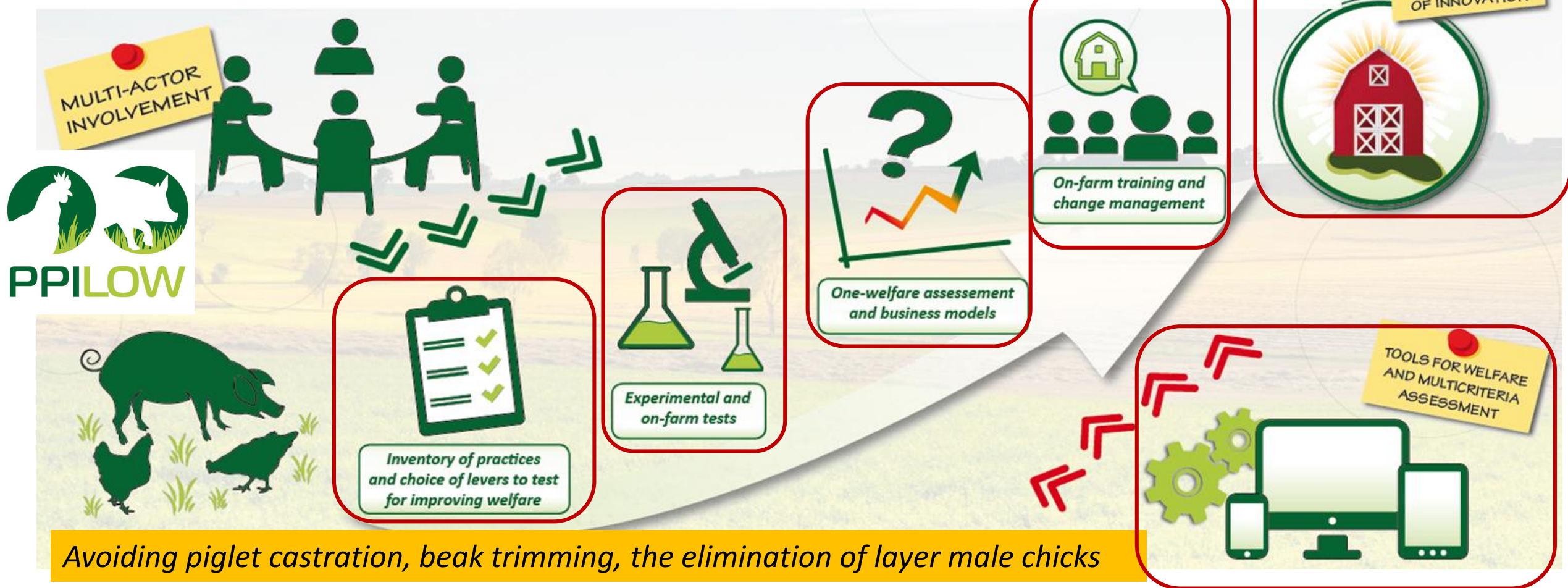
www.onewelfareworld.org

[@onewelfare](https://twitter.com/onewelfare)

[f onewelfare](https://www.facebook.com/onewelfare)

Involvement of NPGs in PPILOW

Innovative breeding and rearing strategies



PPILOW Partners

Organic World
Congress 2021

FRANCE



Fondazione Slow Food
per la Biodiversità
ONLUS



Harper Adams
University



Utrecht University



We thank all the practitioners, consumers and citizens involved in PPILOW!

www.ppilow.eu



**Organic World
Congress 2021**

FRANCE

SEPTEMBER 6TH TO 10TH 2021 IN RENNES

AT THE COUVENT DES JACOBINS • RENNES MÉTROPOLE CONFERENCE CENTRE

THE WORLD ORGANIC CONGRESS IN 2021, IT'S HERE!

WWW.OWC.IFOAM.BIO/2021

Thank you!

FOR MORE INFORMATION PLEASE CONTACT:

papers@owc2020.bio